



# THE CORNA COLLECTION

PBJ  
DESIGNHOUSE  
1968





Corna Ellipse table, Maïor chair in light oak lacq.

Frontpage:  
Corna Ellipse table, Cor chair in dark oak lacq.



# The Corna collection

*designed by Morten Svendsen*

The Corna dining table has a classic, but still modern design with beautiful leg details. It matches any home interior from classic to modern. You can choose 2 different edge profiles - a Soft version and a Slim version.

The rectangular fixed tabletop with solid edges has a smart integrated storage facility for extension leaves at each end and can be ordered with one or two extension leaves.

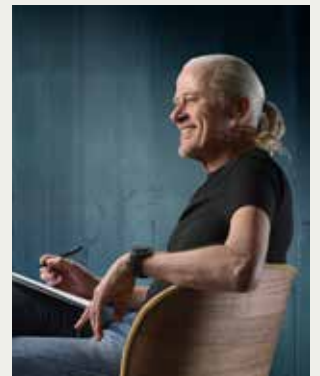
The super ellipse Corna table is beautiful with the curved shape and modern legs. It opens in the middle with a smart butterfly extension solution, it can not be easier. You can also get the super ellipse Corna table in a fixed version.

On the round Corna table the edgy legs have been turned into 4 legs coming out from the centre, which optimize space for chairs. Choose version for 2 or 4 extension leaves. Extension leaves have to be ordered separately.

The table is available in a wide selection of wooden finishes as well as hard-wearing laminate finishes in a wide variety of colours.

The Oculus range of sideboards, highboards and display cabinets, can also be ordered with matching Corna legs, the cabinets are veneered with rounded solid edges and mitre joints. Doors and drawers are with nicely recessed oval handles. All cabinets are also beautifully veneered at the back, so they can be free standing as well.

Enjoy.



Morten Svendsen, owner of PBJ



Corna rectangular table, Cor chairs in light oak lacq.



Corna Round table, Alius chair in light oak lacq.

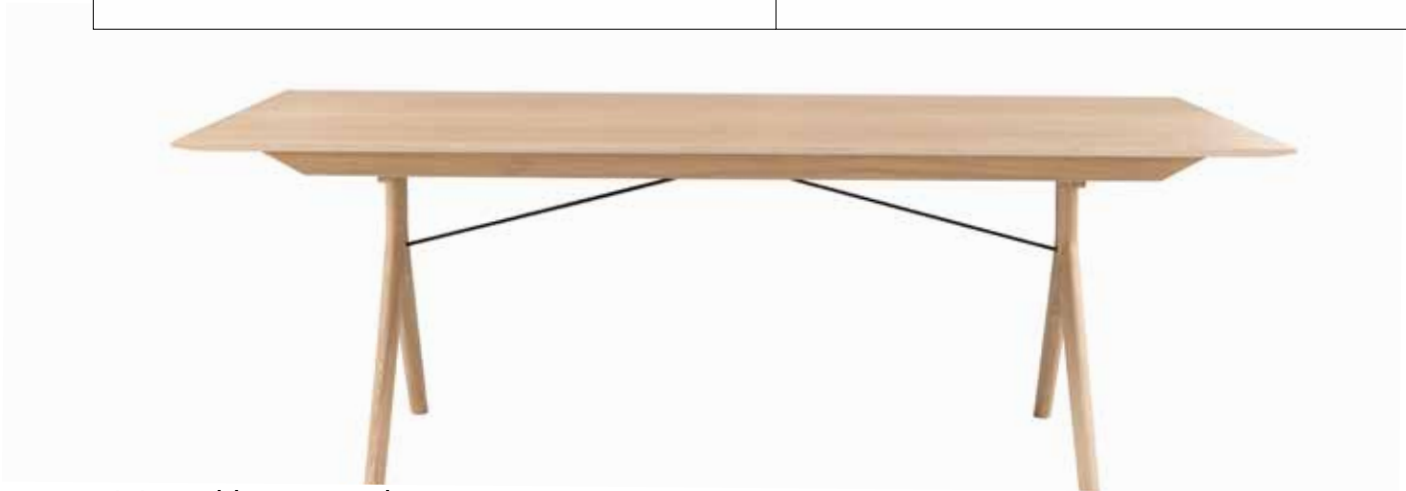


**The Corna table is available with 2 different edge profiles.**

Slim edge



Soft edge



### **Dining table rectangular**

Rectangular dining table with the possibility of extension at each end.  
8-12 or 10-14 seats.

no 770175 - L 175 W 95 H 75 cm

no 770240 - L 240 W 95 H 75 cm

no 770050 - 1 pcs. extension leaf L 50 W 95 cm.

-14 - legs for Rectangular

Extension leaves to be ordered separately.

The table has integrated storage for the leaves at each end.







### Dining table super ellipse

Super ellipse dining table including butterfly extension in the middle.  
6-8 or 10-14 seats.

no 770171 - L 175/240 W 90 H 74 cm

no 770241 - L 240/338 W100 H 74 cm

-14 - legs for Super Ellipse



### Dining table super ellipse with fixed tabletop (only with Slim edge and not in solid wood).

The table is also available with a fixed table top, in sizes 220, 240 and 260 cm

### Dining table round

Round dining table, with the possibility of 1-2 or 1-4 extension leaves.  
4-12, 6-16 or 10-20 seats.

no 770122 - D 122 H 74 cm - max 2 ext.

Option: Version up to max 4 ext.

no 770063 1 pcs. extension leaf - 50 cm.

no 770140 - D 140 H 74 cm - max 2 ext.

Option: Version up to max 4 ext.

no 770064 1 pcs. extension leaf - 50 cm.

no 770160 - D 160 H 74 cm - max 2 ext.

Option: Version up to max 4 ext.

no 770066 1 pcs. extension leaf - 50 cm.

-14 - legs for Round



Extension leaves to be ordered separately.

# Oculus available with Corna legs



## Oculus Glass Cabinet

no. 138093 with light  
no. 138094 without light

Glass cabinet with 2 glass shelves and LED light, controlled with on/of sensor and dimmer.

L 91 W 45 H 185 cm



## Oculus Highboard

no 138110

Highboard with 3 doors and 3 drawers. 1 shelf behind each door.

L 110 W 40 H 138 cm



## Oculus Sideboard 2

no 138120

Sideboard with 1 door and 3 drawers. 1 shelf behind the door.

L 118 W 45 H 75 cm



Corna Super ellipse, Titan chair, Oculus 4XL Sideboard , with Corna legs, in dark oak lacq.





### Oculus Sideboard 3

no 138176

Sideboard with 2 doors and 3 drawers. 1 shelf behind each door.

L 176 W 45 H 75 cm



### Oculus 4XL Sideboard

no 138234

Sideboard with 4 doors and 2 large drawers. 1 long shelf behind each 2 doors.

L 233 W 45 H 90 cm



### Oculus Sideboard 4

no 138233

Sideboard with 3 doors and 3 drawers. 1 shelf behind each door.

L 233 W 45 H 75 cm



### Oculus 4XL Sideboard

no 138235

Sideboard with 4 doors, 1 long shelf behind each 2 doors.

L 233 W 45 H 90 cm



### Oculus 3XL Sideboard

no 138178

Sideboard with 3 doors and 1 long drawer. 1 long shelf behind 2 doors, 1 shelf behind 1 door.

L 176 W 45 H 90 cm

Other leg designs are available - please ask the sales staff for details.



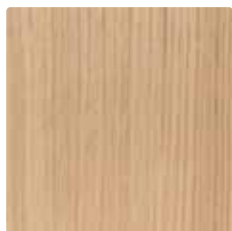
Oculus glass cabinet, with Aeris legs, in light oak lacq.

# Colours and materials

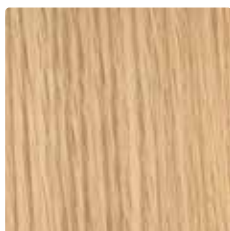
The Corna collection is available in a wide variety of wood finishes.  
The tabletops and sideboard/highboard fronts are also available in a wide range of laminates in different colours.

## WOOD

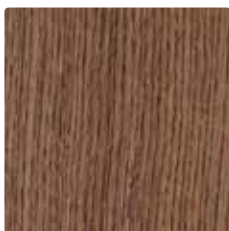
### VENEER



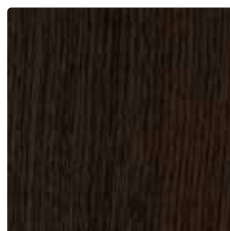
043 Light oak lacq



045 Oak natural lacq

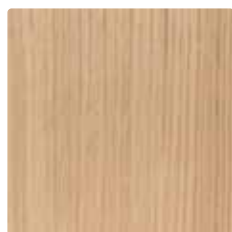


047 Dark oak lacq



049 Smoked oak lacq

SOLID (ONLY DINING TABLE - EXTENSION LEAVES ALWAYS IN VENEER OR LAMINATE - NEVER IN SOLID WOOD))



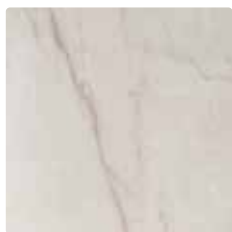
052 Bianco oak oil



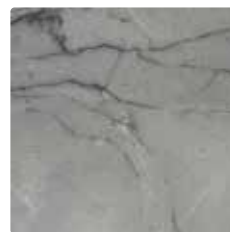
056 Oak natural oil

## LAMINATE

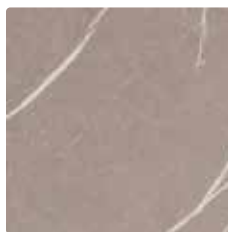
### MARBLE



301 Yule white



302 Yule grey

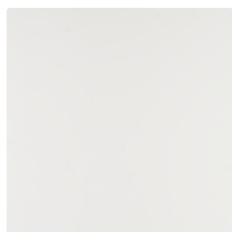


303 Pulpis light



304 Pulpis dark

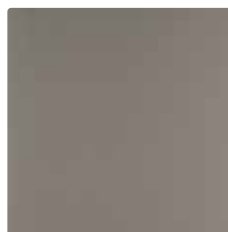
### FENIX



201 Bianco white



204 Deep black



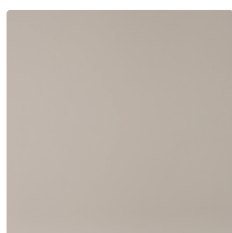
210 Dark warm grey



219 Verde



222 Grigio



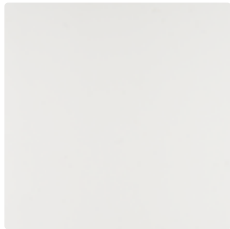
206 Light grey



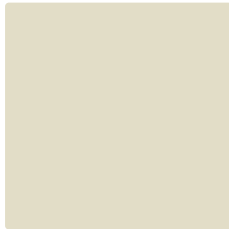
207 Grey brown



HPL (HIGH PRESSURE LAMINATE)



101 White



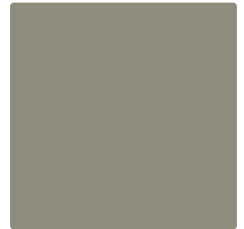
102 Pomice



103 Otter



104 Oyster  
Grey



105 Possum



106 Iron



184 Nero Stone

See [pbjdesignhouse.com](http://pbjdesignhouse.com) or price list for availability of specific products.

The paper used for this brochure is FSC® certified.



Home is a place to belong.  
Filled with love, harmony, joy ... being you.

---

Proud craftsmanship with a critical  
eye for design and quality.

A family-owned Danish company with our own  
production company. We have many years of experience in  
refining the details and meeting the customers' requirements.

DANISH DESIGN SINCE 1968



**PBJ Designhouse**

Skovvænget 2  
DK-7860 Spøttrup  
Denmark

[pbj@pbjdesignhouse.com](mailto:pbj@pbjdesignhouse.com)

[pbjdesignhouse.com](http://pbjdesignhouse.com)

Your specialist dealer:

*The brochure is subject to technical changes and possible printing errors.*